



GY4102A Fast Toggling Video Switch

Features

- 20 ns switching time (toggle)
- make-before-break switching
- 100 MHz at ± 0.1 dB, bandwidth (flattened)
- Pb-free and Green
- typically 0.04 dB insertion loss at 1 MHz
- typically 0.03 % differential gain at 3.58 MHz
- typically 0.01 degree differential phase at 3.58 MHz

Applications

- Sub-pixel video switching
- Fast data sampling
- Modulation
- Special Effects video switching

Description

The GY4102A is a bipolar, monolithic SPDT video switch incorporating fast control logic. The analog signal path is characterised by low differential gain, low differential phase and low insertion loss, coupled with a ± 0.1 dB bandwidth of typically 100MHz into a 10pF load, using an external series resistor.

In demanding video applications the GY4102A features a typical switching glitch of less than 30mV over a 3ns period. The device offers toggle rates up to 50MHz. The control input is TTL and 5V CMOS compatible.

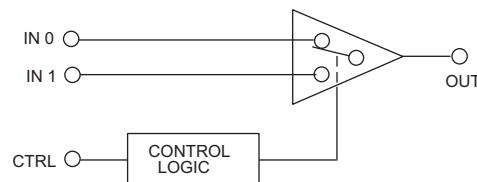


Figure A: GY4102A Functional Block Diagram

Revision History

Version	Date	Changes and/or Modifications
4	November 2009	Updated to latest Gennum template and changed from document number 52021 to 13408.
3	July 2004	Added lead-free and green information.
2	–	Revisions made.
1	February 1991	New document.

Contents

Features.....	1
Applications.....	1
Description.....	1
Revision History	2
1. Pin Connections	3
1.1 Pin Connections	3
1.2 Truth Table	3
2. Electrical Characteristics	4
2.1 Absolute Maximum Ratings	4
2.2 Electrical Characteristics	4
2.3 Switching Characteristics	6
3. Typical Performance Curves	7
4. Test Circuits	9
5. Ordering Information.....	11

1. Pin Connections

1.1 Pin Connections

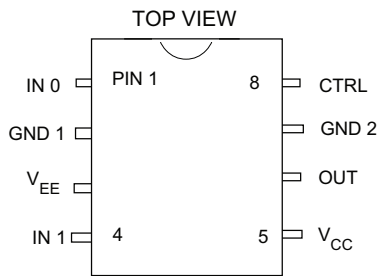


Figure 1-1: 8-Pin PDIP, 8-Pin SOIC

1.2 Truth Table

Table 1-1: Truth Table

CTRL	OUTPUT
0	IN 0
1	IN 1

2. Electrical Characteristics

2.1 Absolute Maximum Ratings

Table 2-1 lists the absolute maximum ratings for the GY4102A. Conditions exceeding the limits listed may cause permanent damage to the device. This is a stress rating only and functional operation of the device at these or any other conditions above those listed in the operational sections of this specification is not implied. Exposure to absolute maximum rating conditions for extended periods may affect device reliability.

Table 2-1: Absolute Maximum Ratings

Parameter	Value
Supply Voltage Range	$\pm 6.0\text{ V}$
Operating Temperature Range	-0°C to 70°C
Storage Temperature Range	-65°C to 150°C
Lead Temperature (Soldering, 10 Sec)	260°C
Analog Input Voltage (IN 0, IN 1)	$V_{EE} < V_{IN} < V_{CC} + 0.3\text{V}$
Control Input Voltage Range	$-5\text{V} < V_{CTRL} < V_{CC} + 0.3\text{V}$

2.2 Electrical Characteristics

Table 2-2 shows the electrical characteristics of the GY4102A where conditions are $V_S = \pm 5\text{V DC}$, $T_A = 0$ to 70°C , $C_L = 10\text{pF}$, $R_L = 10\text{k}\Omega$ unless otherwise shown.

Table 2-2: Electrical Characteristics

	Parameter	Symbol	Conditions	Min	Typ	Max	Units
DC SUPPLY	Supply Voltage	$\pm V_S$	–	4.5	5	5.5	V
	Supply Current	I +	–	–	23	30	mA
		I -	–	–	–	25	32
LOGIC	Control Input Bias	I_{CTRL}	Control = 1	–	5	25	μA
	Logic Level Threshold	V_{LOGIC}	1	2	–	–	V
			0	–	–	0.8	V

Table 2-2: Electrical Characteristics (Continued)

	Parameter	Symbol	Conditions	Min	Typ	Max	Units
STATIC	Analog Input Bias Current	I_{BIAS}	Selected Channel	-	12	30	μA
			Deselected Channel	-	26	60	μA
	Signal Voltage Swing	V_{SIG}	Extremes before clipping occurs	-1.5	-	+3	V
	Output Offset Voltage	V_{OS}	$T_A = 25^\circ C$	-6	+4	+14	mV
	Output Offset Voltage	$V_{OSCH-CH}$	$T_A = 25^\circ C$ channel to channel	-	1	5	μA
	Output Offset Drift	$\Delta V_{OS}/T$	-	-	+93	+200	$\mu V/^\circ C$
DYNAMIC	Input Resistance	R_{IN}	Channel On	500	-	-	k Ω
	Input Capacitance	C_{IN}	Channel On	1.3	-	-	pF
	Frequency Response Flatness	-	DC - 100MHz $R_S = 33\Omega$	-	± 0.2	-	dB
			DC - 8MHz $R_S = 33\Omega$	-	-	± 0.01	dB
	Insertion Loss	IL	$f = 1MHz$	-	0.04	-	dB
	Differential Gain	dg	$f = \text{colorburst } 3.58 \text{ or } 4.43MHz$	-	0.03	-	%
	Differential Phase	dp	$f = \text{colorburst } 3.58 \text{ or } 4.43MHz$	-	0.01	-	degrees
	Crosstalk (all hostile)	$XTALK_{AH}$	$f = 10MHz$ See Figure 3-3.	75	80	-	dB
	Slew Rate	+SR -SR	$V_{IN} = 2Vp-p$ $T_A = 25^\circ C$	400	620	-	V/ μs
250				330	-	V/ μs	

2.3 Switching Characteristics

Table 2-3 shows the switching characteristics of the GY4102A where conditions are $V_S = \pm 5V$, $T_A = 0^\circ C$ to $70^\circ C$, $C_L = 10pF$, $R_S = 33\Omega$, $R_L = 10k\Omega$, unless otherwise shown.

Table 2-3: Switching Characteristics

Parameter	Symbol	Conditions	Min	Typ	Max	Units	
Delay Time	t_d (on 1)	$V_{SIG} = 0 - 1V$	-	5.4	9	ns	
	t_d (on 2)		-	8.2	13	ns	
	t_d (off 1)	$V_{SIG} = 1 - 0V$	-	6	11	ns	
	t_d (off 2)		-	12.5	22	ns	
Settling Time	t_s (on)	T_O 0.5 IRE on 0 to 1V output, $T_A = 25^\circ C$	-	9	15	ns	
	t_s (off)	T_O 0.5 IRE on 1 to 0V output, $T_A = 25^\circ C$	-	7	15	ns	
Switching Transient* (Unfiltered)		POS	Amplitude	-	+30	+50	mV
			Duration	-	3	5	ns
		NEG	Amplitude	-	-20	-30	mV
			Duration	-	2	3	ns
*CH0 = CH1 = GND							

3. Typical Performance Curves

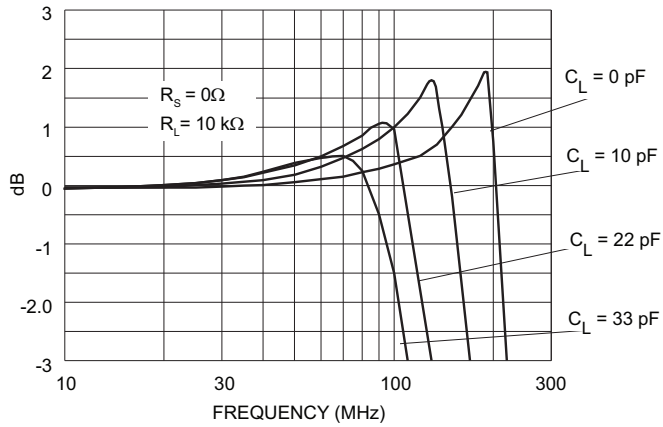


Figure 3-1: Frequency Response

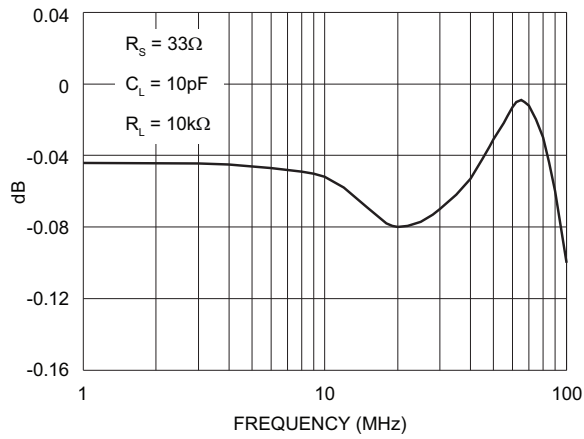


Figure 3-2: Flattened Frequency Response

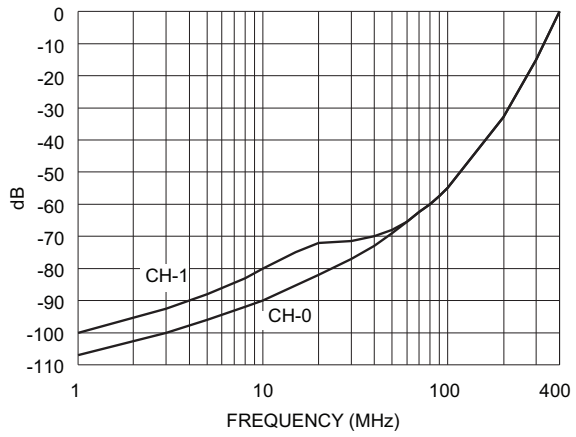


Figure 3-3: Crosstalk vs Frequency

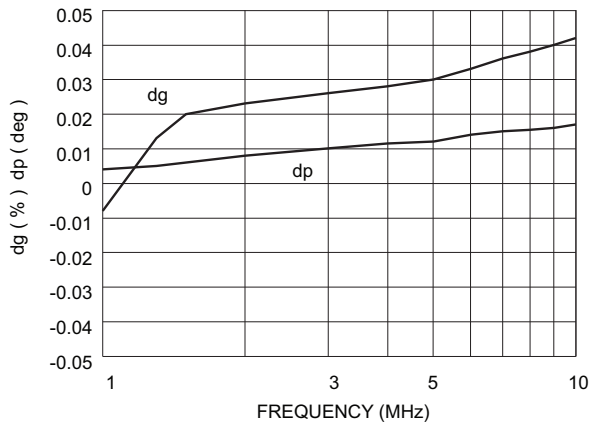
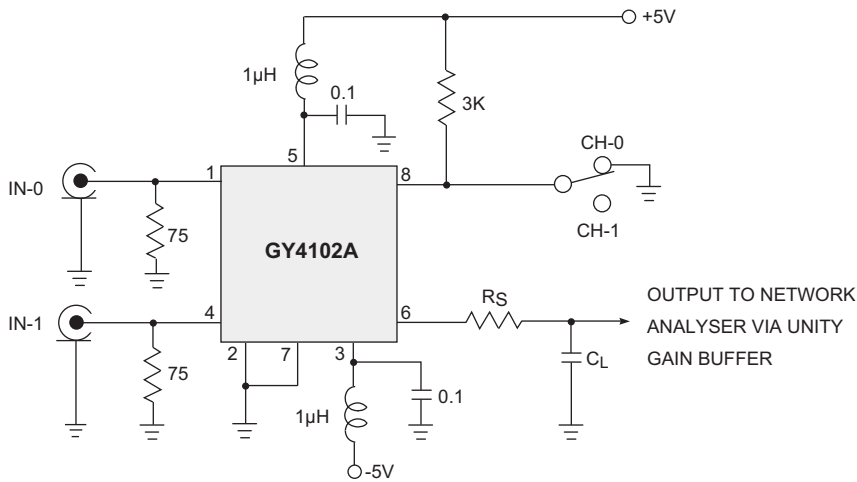


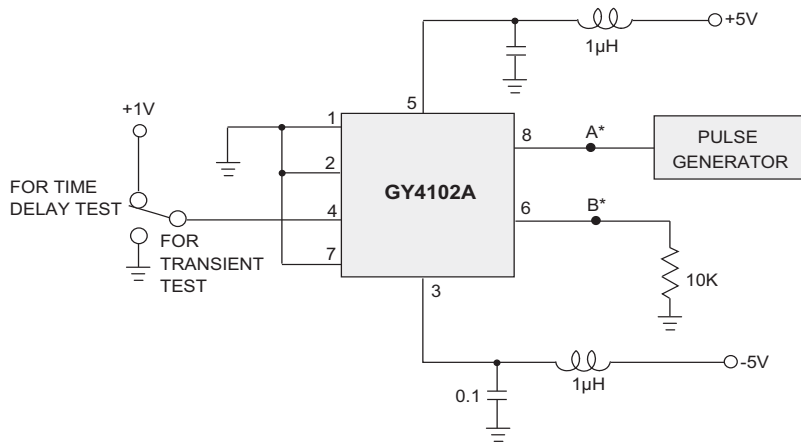
Figure 3-4: Differential Gain and Phase

4. Test Circuits



All resistors in ohms, all capacitors in microfarads, unless otherwise stated.

Figure 4-1: Frequency Response



*USE ULTRA LOW CAPACITANCE SCOPE PROBES AT POINTS A & B
 PULSE GENERATOR CHARACTERISTICS: $t_r = t_f \leq 1\text{ns}$ $V_o = 5\text{V}$ $p_r \leq 20\text{MHz}$
 All resistors in ohms, all capacitors in microfarads, unless otherwise stated.

Figure 4-2: Switching Transient/Time Delays

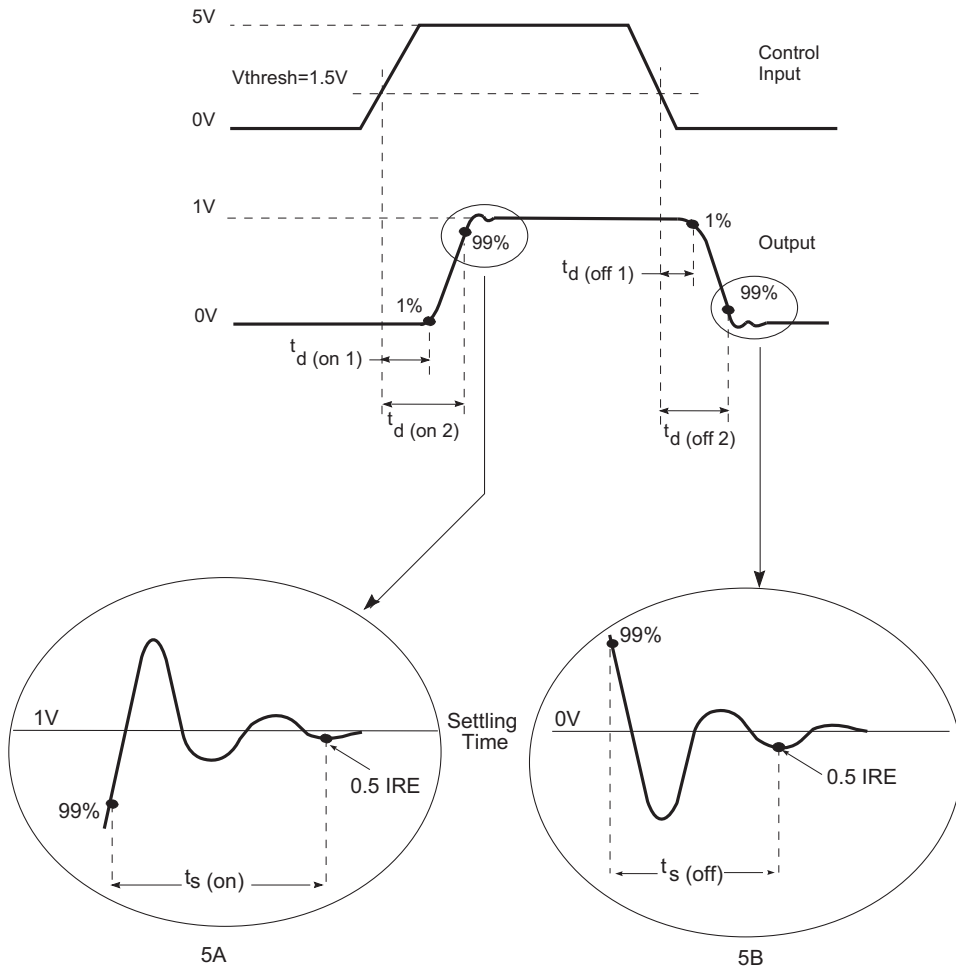


Figure 4-3: Delay Time

5. Ordering Information

Table 5-1: Ordering Information

Part Number	Package	Temperature Range	Pb-Free and Green
GY4102ACDA	8 pin PDIP	0°C to 70°C	No
GY4102ACKA	8 pin SOIC	0°C to 70°C	No
GY4102ACKAE3	8 pin SOIC	0°C to 70°C	Yes

**DOCUMENT IDENTIFICATION
DATA SHEET**

The product is in production. Gennum reserves the right to make changes to the product at any time without notice to improve reliability, function or design, in order to provide the best product possible.

CAUTION

ELECTROSTATIC SENSITIVE DEVICES
DO NOT OPEN PACKAGES OR HANDLE EXCEPT AT A
STATIC-FREE WORKSTATION



GENNUM CORPORATE HEADQUARTERS

4281 Harvester Road, Burlington, Ontario L7L 5M4 Canada

Phone: +1 (905) 632-2996

E-mail: corporate@gennum.com

Fax: +1 (905) 632-2055

www.gennum.com

OTTAWA

232 Herzberg Road, Suite 101
Kanata, Ontario K2K 2A1
Canada

Phone: +1 (613) 270-0458

Fax: +1 (613) 270-0429

CALGARY

3553 - 31st St. N.W., Suite 210
Calgary, Alberta T2L 2K7
Canada

Phone: +1 (403) 284-2672

UNITED KINGDOM

North Building, Walden Court
Parsonage Lane,
Bishop's Stortford Hertfordshire, CM23 5DB
United Kingdom

Phone: +44 1279 714170

Fax: +44 1279 714171

INDIA

#208(A), Nirmala Plaza,
Airport Road, Forest Park Square
Bhubaneswar 751009
India

Phone: +91 (674) 653-4815

Fax: +91 (674) 259-5733

SNOWBUSH IP - A DIVISION OF GENNUM

439 University Ave. Suite 1700
Toronto, Ontario M5G 1Y8
Canada

Phone: +1 (416) 925-5643

Fax: +1 (416) 925-0581

E-mail: sales@snowbush.com

Web Site: <http://www.snowbush.com>

MEXICO

288-A Paseo de Maravillas
Jesus Ma., Aguascalientes
Mexico 20900

Phone: +1 (416) 848-0328

JAPAN KK

Shinjuku Green Tower Building 27F
6-14-1, Nishi Shinjuku
Shinjuku-ku, Tokyo, 160-0023
Japan

Phone: +81 (03) 3349-5501

Fax: +81 (03) 3349-5505

E-mail: gennum-japan@gennum.com

Web Site: <http://www.gennum.co.jp>

TAIWAN

6F-4, No.51, Sec.2, Keelung Rd.
Sinyi District, Taipei City 11502
Taiwan R.O.C.

Phone: (886) 2-8732-8879

Fax: (886) 2-8732-8870

E-mail: gennum-taiwan@gennum.com

GERMANY

Hainbuchenstraße 2
80935 Muenchen (Munich), Germany

Phone: +49-89-35831696

Fax: +49-89-35804653

E-mail: gennum-germany@gennum.com

NORTH AMERICA WESTERN REGION

691 South Milpitas Blvd., Suite #200
Milpitas, CA 95035
United States

Phone: +1 (408) 934-1301

Fax: +1 (408) 934-1029

E-mail: naw_sales@gennum.com

NORTH AMERICA EASTERN REGION

4281 Harvester Road
Burlington, Ontario L7L 5M4
Canada

Phone: +1 (905) 632-2996

Fax: +1 (905) 632-2055

E-mail: nae_sales@gennum.com

KOREA

8F Jinnex Lakeview Bldg.
65-2, Bangidong, Songpagu
Seoul, Korea 138-828

Phone: +82-2-414-2991

Fax: +82-2-414-2998

E-mail: gennum-korea@gennum.com

Gennum Corporation assumes no liability for any errors or omissions in this document, or for the use of the circuits or devices described herein. The sale of the circuit or device described herein does not imply any patent license, and Gennum makes no representation that the circuit or device is free from patent infringement.

All other trademarks mentioned are the properties of their respective owners.

GENNUM and the Gennum logo are registered trademarks of Gennum Corporation.

© Copyright 1991 Gennum Corporation. All rights reserved.

www.gennum.com